

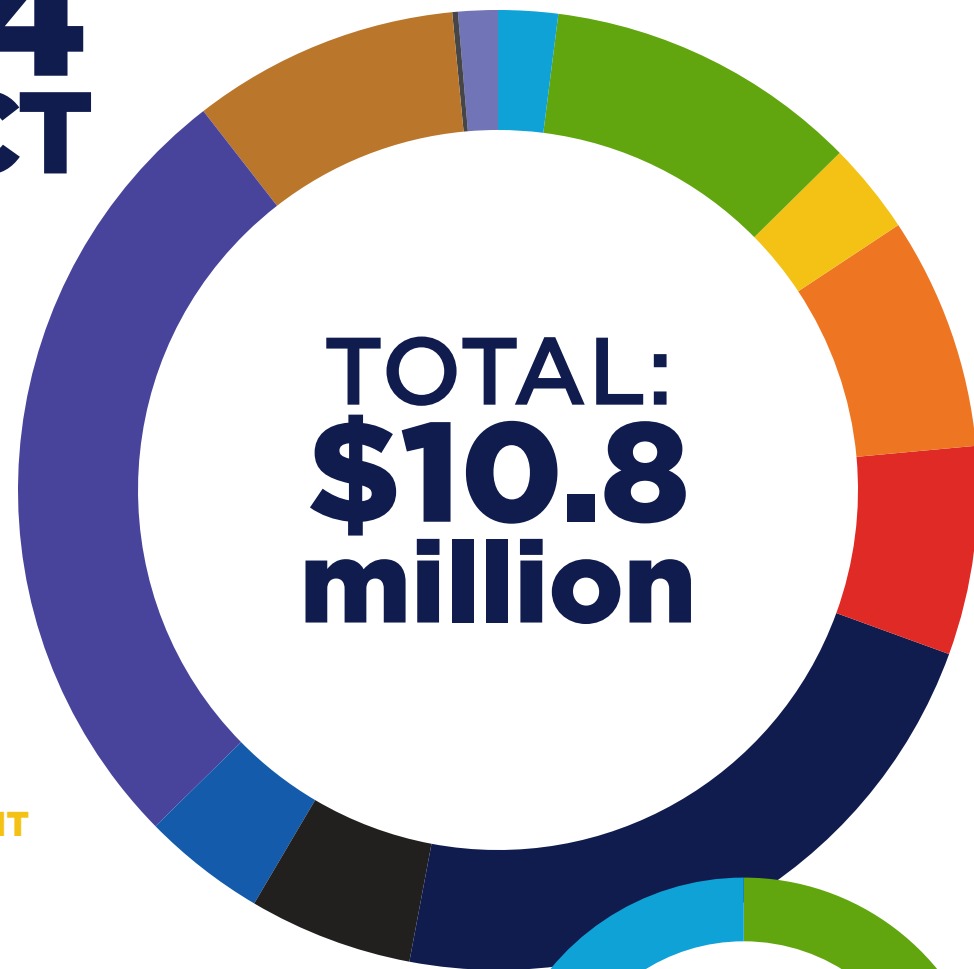
2024 ANNUAL REPORT



OUR COMMUNITY'S *journey*



2024 IMPACT



AGING
\$217,454

ARTS & CULTURE
\$1,148,218

CAREER DEVELOPMENT
\$334,493

CHILDREN & YOUTH
\$848,962

**COMMUNITY & ECONOMIC
DEVELOPMENT** \$760,535

EDUCATION
\$2,426,775

ENVIRONMENT
\$451,534

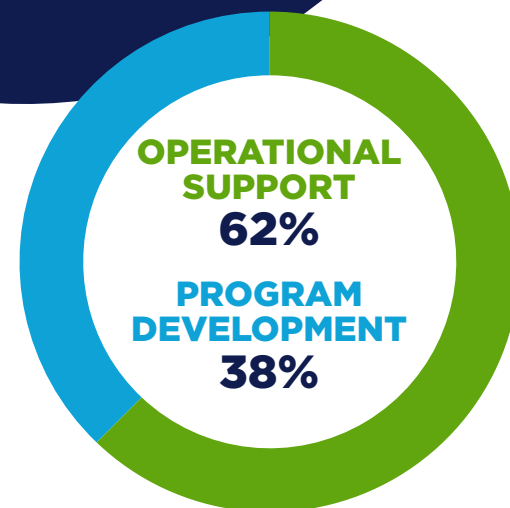
FAITH-BASED
\$598,134

HEALTH & HUMAN NEEDS
\$2,906,594

HOUSING
\$974,505

OTHER
\$20,523

RACIAL EQUITY & DEI
\$144,465



\$6.6 million
supports general nonprofit operations

\$4.2 million
supports program
development & expansion

2024 BY THE NUMBERS

28
NEW
FUNDS

690
TOTAL #
OF FUNDS

\$12.4 MILLION
IN GIFTS

\$119 MILLION
CUMULATIVE GRANTS AWARDED

\$227 MILLION
ASSET SIZE

7.1% 10-YEAR
INVESTMENT RETURN



A SHARED PATH, A STRONGER FUTURE: OUR COMMUNITY'S *journey*

As we reflect on the past year, we are deeply grateful for our community, donors, volunteers, and nonprofit partners. Your support has fueled growth, innovation, and an unwavering commitment to building a thriving community. This journey is one we take together, walking a shared path toward a stronger future.

STRENGTHENING COMMUNITY CONNECTIONS HAS BEEN A KEY FOCUS AS WE NAVIGATE THE TRANSITIONS WITHIN OUR COMMUNITY. WE UNDERSTAND THE VALUE OF FLEXIBILITY, ADAPTABILITY, AND RESILIENCY AS YOUR YORK COUNTY COMMUNITY FOUNDATION.

We invite all within our community to visit us, meet our team, experience the energy that defines our organization, and learn how we can make an impact together. By collaborating, we ensure that more individuals and organizations benefit from our resources—whether as donors, grantees, or partners—reinforcing the bonds that make York strong and a force for progress.

This year, we advanced nonprofit sustainability through the launch of the York County Nonprofit Collaborative, fostering greater collaboration, resource-sharing, and impact. Together, we are building a more resilient sector—one that thrives through collective effort and shared vision.

Investing in our team has also been a priority. By strengthening operations and planning strategically, we empower our staff to provide the best experience for our donors and partners. Their passion for their work and for this collective community drives our progress, and we are committed to supporting them as they support you, our donors, and community partners.

We are inspired and fueled by the power of community. As one of the top five community foundations in the Commonwealth, we know that our success is due to you—the people who make up this incredible place. Your support not only makes our work possible but also changes lives and shapes York County for generations to come.

Thank you for being a part of this journey. We look forward to all that we will accomplish together.

With gratitude,



Natalee C. Gunderson
President & CEO



Harold N. Myers, Jr.
Board Chair

OUR DIVERSITY, EQUITY AND INCLUSION NORTHSTAR

The York County Community Foundation board and staff are committed to making York County equitable and inclusive. We will prioritize our own internal education on systemic racism, ageism, and other forms of bias. All decision-making will be mindful of equitable practices and diversity, including decisions about grantmaking, donor services and community initiatives. To fuel, lead, and support community transformation, we will be bold, intentional, authentic, and public about our values and commitment to racial equity. Sharing knowledge and power is essential to this commitment.



2024 KEY INITIATIVE

investing IN YORK COUNTY'S NONPROFITS

Nonprofit organizations are an important part of the strength and vibrancy of York County, driving economic growth, providing essential services, and fostering community well-being.



With more than 1,300 nonprofits employing 16% of the local workforce and generating over \$6 billion in revenue, their role in the economy is undeniable.

Recognizing the sector's importance, the York County Community Foundation (YCCF), alongside the Powder Mill Foundation and the Warehime Foundation, initiated a 2023 study to evaluate the nonprofit landscape.

In response to the findings of this study, YCCF and its partners are implementing targeted supportive strategies. These efforts include capacity-building initiatives, leadership development programs, and diversifying funding streams for the nonprofit sector. Central to these initiatives is the newly formed York County Nonprofit Collaborative, a coalition of funders and nonprofit representatives dedicated to advancing key priorities. Learn more at yccf.org/nonprofit-landscape.



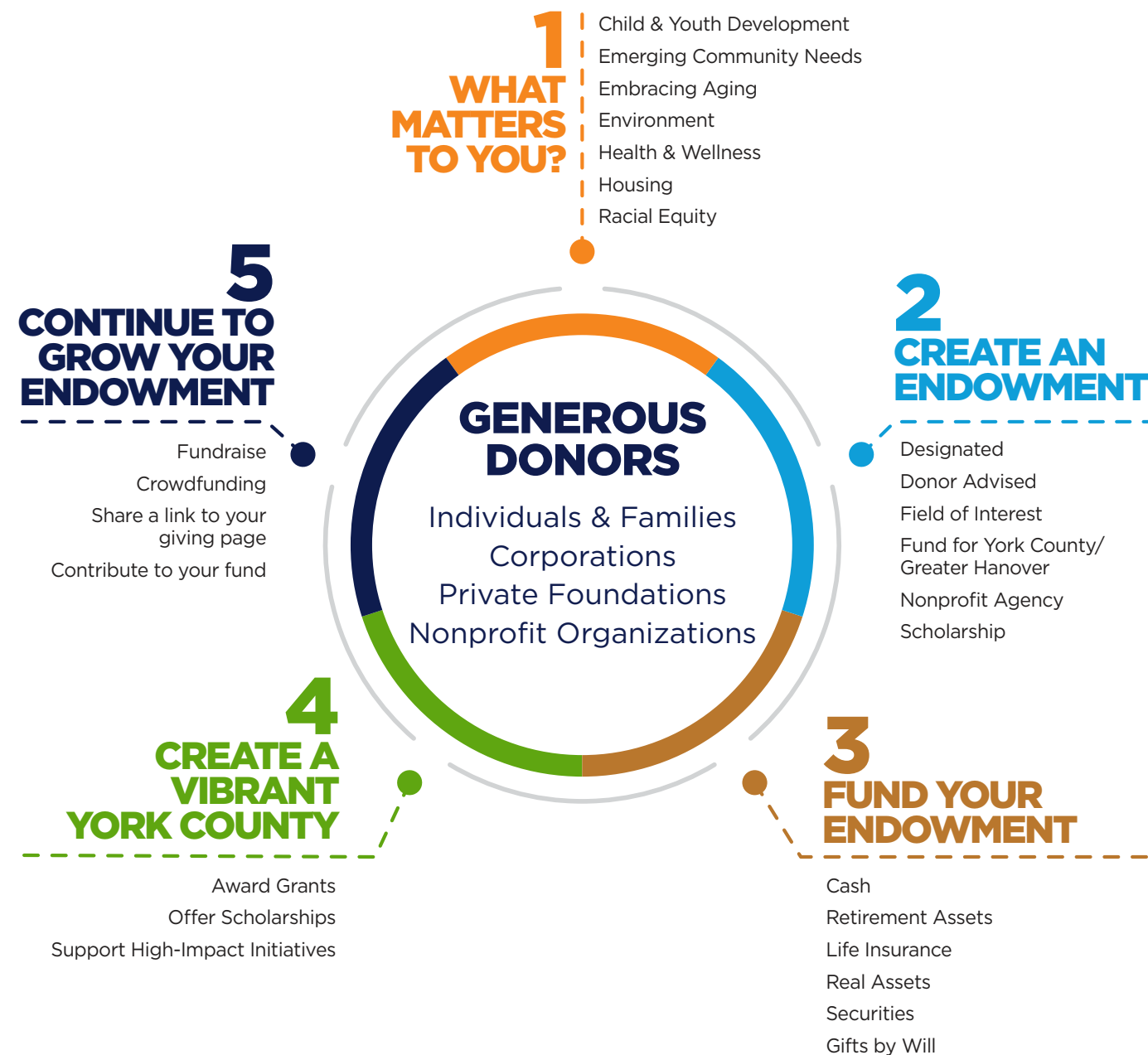
FIND YCCF'S LIST OF
ENDOWMENT FUNDS HERE:



2024 NEW FUNDS

ALBERT AND HELEN DIEHL FUND FOR YORK COUNTY
ALLAN DAMESHEK FUND
ANN AND MATT GRUNER FAMILY FUND
CAITLIN RIDDLE-RIZZARDO EDUCATION SCHOLARSHIP FUND
CHARLES E. STOUT HARMONY FUND
CHRIST EVANGELICAL LUTHERAN CHURCH OF SPRY FLEXIBLE FUND
CHRIST EVANGELICAL LUTHERAN CHURCH OF SPRY FUND
CULTURAL ALLIANCE FLEXIBLE FUND
DALE A. AHMUTY FUND FOR YORK COUNTY
HAZEL EISENHART FUND FOR YORK COUNTY
HENRY MANECKE FUND FOR GREATER HANOVER
HERCULITE CHARITABLE FOUNDATION FUND
JOSEPHINE D. APPELL FUND
KENNETH M. WALLICK, JR. FUND FOR YORK COUNTY
LA FAMILIA GUNDERSON FUND FOR YORK COUNTY
LYDIA'S LEGACY FUND
MICHELE'S RAE OF HOPE FUND
MILDRED M. CHAPMAN FUND
NEVER AGAIN HOLOCAUST EDUCATION THROUGH MUSIC AND THE ARTS FUND
OTTERBEIN CHURCH MOUNT WOLF FLEXIBLE FUND
OTTERBEIN EARLY EDUCATION CENTER FLEXIBLE FUND
SHERRY A. HOKE FUND
SHERRY A. HOKE FUND FOR YORK COUNTY
SPRING GROVE FRIENDSHIP HOSE CO. #1 FUND
WEBER FAMILY SCHOLARSHIP FUND
WILLIAM S. EISENHART, JR. MEMORIAL FUND
YORK LITERACY INSTITUTE
BOBBI ANNE DELEO FLEXIBLE FUND
ZACH'S HOPE FUND

HOW YCCF WORKS FOR *you.*



OUR MISSION

"We create a Vibrant York County by engaging donors, providing community leadership, and investing in high-impact initiatives while building endowment for future generations."

OUR VISION

York County is a growing, prosperous, and united community with unsurpassed opportunities for everyone to thrive.

WHY YCCF? THE POWER OF *endowment*

A gift to York County Community Foundation places you among hundreds of donors striving to make York County a better place.

For nearly 65 years, donors have trusted YCCF to help create and steward funds that benefit the causes they care about and to ensure their legacy endures well beyond their lifetime. Gifts to an endowed fund are carefully invested and have the ability to make a greater impact than a one-time donation.

**WHATEVER YOUR PASSION,
WE CAN MAKE IT YOUR LEGACY.**

**A FUND
STARTED WITH
\$25,000**

*Hypothetical fund
growth based on
YCCF's 10 year return.*

YEAR 5

FUND BALANCE	CUMULATIVE GRANTS AWARDED
\$26,066	\$5,706

YEAR 15

FUND BALANCE	CUMULATIVE GRANTS AWARDED
\$27,054	\$17,522

A PARTNERSHIP FOR *generations*



Photos by Em's Lens Photography

For over 150 years, Otterbein Church has served the Mount Wolf community, adapting to meet changing needs while staying true to its mission. Through a partnership with YCCF, the church ensures its impact will continue for generations.

One of Otterbein Church's most impactful ministries is its Early Education Center, serving 100 children and their families. It was among the first Keystone STARS 4 sites in York County, reflecting its commitment to high-quality learning. In 1999, the church created the **Otterbein Early Childhood Care and Education Fund** at YCCF, providing lasting support. In addition to operational support, a portion of this fund awards a \$500 scholarship to a graduating senior who once attended the center.

“It's special to see our students grow and chase their dreams,” says Executive Director Wendy Latshaw.

Beyond education, Otterbein supports community members in need through the **CHEF Fund in Honor of Mike DeVeny**, established in memory of a beloved church member. This fund sustains the Helping Hands program, providing critical aid, like rental and utility assistance, or food, to families in the Northeastern School District.

“Mike had a heart for serving others, and this fund keeps his legacy alive,”
shares Pastor Mark Zortman.

Looking ahead, Otterbein is securing its future by establishing **Flexible Funds** for both the church and early education center through YCCF. In anticipation of a planned capital campaign, the church endowed funds from a large donation and asset sales to ensure long-term financial health.

“We trust YCCF's investment approach and appreciate the ability to accept non-cash gifts like stocks,” says Pastor Mark.

Through strategic financial stewardship with YCCF, Otterbein Church continues its legacy of faith, education, and service, ensuring a lasting impact on Mount Wolf for generations to come.

WHAT'S *math* GOT TO DO WITH IT?



Financial planning isn't usually top of mind for most students, and not everyone would say math class was their favorite subject. Sometimes, parents and teachers hear children say . . .

“When will I ever use this when I grow up?”

ENTER: JUNIOR ACHIEVEMENT (JA)!

Founded in 1961, Junior Achievement of South-Central PA serves over 100,000 PreK-12th grade students annually for free. Since the organization's headquarters and BizTown program are located in York County, many YCCF staff and community members have the opportunity to volunteer and see firsthand how students benefit from JA's career-readiness programs.

Through engaging, experiential lessons, JA programs help students connect what they're learning in the classroom to the real world. Their goal is to help children recognize the value of education, even if they don't love math class!

With a **THRIVE grant from YCCF**, a program was created for York County's 71 Title I Schools – a designation for schools where over 40% of the student population qualify for free or reduced lunch. Traditional JA programs were reworked to provide a more tailored strategy that better suits the needs and challenges of these schools and its students. This new approach will provide financial literacy and work readiness opportunities to over 20,000 PreK-12th grade students all across the county during the 2024-25 school year.

In the School District of the City of York, this program was complemented by a grant from the **Racial Equity Fund** to place a dedicated part-time JA employee in the schools. This ensures that programs continue to be offered to York City students, even when there is a shortage of volunteers.

JA programs are designed to help students learn to manage their finances, understand basic economic concepts, explore various careers, and develop in-demand job skills. “Our hope is to equip students with the tools they need to prepare for their journey to adulthood. We want young people to understand the importance of making informed financial decisions, and we're eager to see how they contribute to the success of their local economy,” shared CEO of JA, Allison Kierce.

SCAN TO WATCH
A VIDEO HERE:



NEW FUND FEATURE:

THE HAZEL EISENHART FUND

Hazel Eisenhart's history with the York County Community Foundation began in 1964 as a founding member of the York Foundation. Over 60 years later, her philanthropic legacy will continue, thanks to the creation of the Hazel Eisenhart Fund for York County, adding to YCCF's discretionary grantmaking fund. By placing her trust in the Foundation's ability to assess the ever-changing needs of our county, Hazel Eisenhart's fund will provide grant dollars to projects that fuel community transformation for future generations.



NEW FUND FEATURE:

THE SPRING GROVE FRIENDSHIP HOSE CO. # 1 FUND

For over 140 years, volunteer firefighters have proudly worked to keep our community safe despite minimal local, state and federal funding. They rely heavily on donations from fundraisers to operate but recently the Spring Grove Friendship Hose Co. #1 realized that it needed a more reliable source of funds. With guidance from John Bailey and YCCF, it created the Spring Grove Friendship Fire Hose Fund to help support operations indefinitely.



CONNECTING *community* TO THE CODORUS

The Watershed Alliance of York (WAY) is making a splash in York County by working to improve the health of local waterways through hands-on education and community engagement. Supported by grants from **YCCF's Codorus Watershed Fund**, WAY is building a deeper connection between the people of York and the natural resources that sustain us.

By hosting events such as Watershed Discovery Day, where York County students gathered at Keystone Kidspace to explore the macroinvertebrates and freshwater mussels of Codorus Creek, and Youth & Family Fishing & Conservation Day at Kiwanis Lake, which welcomed over 100 local kids to experience fishing (many for the first time!), WAY is inspiring the next generation of environmental advocates for York County's precious water resources.

These events foster positive, lasting connections to the natural world — something Rachel Stahlman, WAY's president, believes is essential for long-term conservation. "When people have a positive connection, they are more likely to protect and preserve natural resources," Stahlman explains. By engaging the community in hands-on experiences, WAY is ensuring that the Codorus Watershed - York County's primary water source - remains clean, safe, and protected for generations to come.



Photo by Emily Golihew of EG Photography

THE KEY TO *unlocking* LANGUAGE BARRIERS

Imagine moving to a country where people speak a different language — one you can't speak or understand. Now imagine being unable to purchase a home, find employment, or enroll your child in school because of this language barrier. These are the challenges that roughly 8.8%, or more than 40,000, York County residents face.

Thankfully, the York Literacy Institute (YLI) is dedicated to alleviating this barrier for immigrants, and **YCCF's Racial Equity Fund** is proud to support their efforts.

Since 1976, the YLI has helped thousands of people improve their English-speaking and literacy skills through its English as a Second Language (ESL) class. In the last two years, enrollment has grown by 45 percent, indicating a need for increased support. Currently, YLI serves students speaking more than 15 different primary languages.

But ESL students aren't just bettering themselves; they're improving the lives of their entire families. Studies show that children in the care of English-speaking adults are more likely to succeed in school and break cycles of generational poverty. President & CEO of YLI, Jason McSherry, says, "Literacy is a key that opens doors to opportunity. Our ESL class is often the first step students take to pursue higher education, employment, and opportunities that help create a vibrant community."

NEW FUND FEATURE:

THE HERCULITE CHARITABLE FOUNDATION FUND



Many businesses feel a responsibility to give back to the community. With its roots in York County, Herculite Products, Inc., a custom fabric manufacturer, chose YCCF to establish and house the Herculite Charitable Foundation Fund. Each year, a committee of Herculite employees will discuss funding priorities and recommend a list of grantees.

"We are more than just a business—we are an active part of the community, and through our partnership with YCCF, we will continue to make a difference for generations to come," shared Marco Angelone, CFO of Herculite Products.

KEEPING THE WHEELS OF *hope* TURNING

Many people have experienced that dreaded moment when their car wouldn't start — often at the most inopportune time. For Jon*, it was on the day of a long-awaited job interview when first impressions mattered. Without reliable transportation, he knew his chances of landing a job were slim.

Thankfully, there's an organization in York that offers people like Jon a second chance.

Founded by local churches in 1983, New Hope Ministries (NHM) opened as a safe place for people seeking assistance during a global recession. Over 40 years later, the mission of NHM has expanded to meet the needs of communities across central Pennsylvania. Last year, the organization served over 25,000 people through various programs designed to empower youth and adults to lead a successful life.

In 2024, a grant from YCCF helped launch the Hope Rides Program to assist thousands of people like Jon who lack access to reliable and affordable transportation. NHM's Hope Rides Program is able to provide loaner vehicles to people who are trying to secure a steady job, with a goal of helping at least 50 individuals in York County this year. Transportation can be a major barrier for low-income families seeking and retaining employment. According to the 2024 United Way of York County Transportation Study, over 6% or 10,078 households in York County do not have a vehicle available to them. With 84% of York County residents living in "car-dependent" areas, access to an automobile is essential for maintaining employment.

"I believe there should be a place you can go when life gets hard," shared Eric Saunders, executive director of NHM.

"With this grant from the Foundation and generous gifts from the community, we now own a fleet of 15 loaner vehicles, and we're seeing firsthand what a game-changer it can be when you help alleviate somebody's transportation worries."

For those who own a car that's undrivable, NHM offers financial assistance to cover vehicle repair costs, insurance and registration fees, and even driving courses. The Hope Rides program also offers alternative transportation solutions such as bicycles, bus passes, and ride-share assistance.

*Name has been changed to protect guests of NHM



SCAN TO WATCH
A VIDEO HERE:



NEW FUND FEATURE:

CAITLIN RIDDLE-RIZZARDO EDUCATION SCHOLARSHIP FUND



Ever since she was a little girl, Caitlin dreamed of becoming a kindergarten teacher. Caitlin dedicated 12 years of her life to educating and inspiring her kindergarten students to reach their full potential.

Through the Caitlin Riddle-Rizzardo Education Scholarship Fund, Caitlin's legacy of imparting a love of learning will continue for future aspiring educators. Caitlin's family chose YCCF to manage this fund, which honors the memory of a devoted wife, mother, daughter, and teacher, and ensures her passion for education is never forgotten.

STRONGER *minds* STRONGER COMMUNITY



Mental health is a key priority for our community. In 2024, **Memorial Health Fund (MHF)** provided grants to several organizations leading the way.

A grant to the **National Alliance on Mental Illness (NAMI)** expanded its PAUSE Peer Youth Support Groups to two new school districts, now reaching 3,500 additional students. These support groups provide a lifeline for teens by fostering connection and understanding in their mental health journeys. Another impactful grant enabled the York City School District to implement universal behavioral health screenings, ensuring students receive timely interventions and access to transformative programs like PAUSE.

Addressing the urgent issue of suicide prevention, MHF funded a collaborative pilot led by **Suicide Prevention of York**. This initiative goes beyond awareness, creating peer-led “Hope Squads” in schools, churches, and community centers to build robust emotional support networks of people and a mental health crisis first responder who can save lives in times of crisis.

MHF also supports **Cross Keys Village** in extending free dementia care training and support groups to the wider community, equipping over 1,000 caregivers with the tools to provide compassionate care. Simultaneously, the **York Opioid Coalition’s Collective Response Initiative** is tackling substance use disorder through a coordinated, community-driven approach, bringing together 25 organizations to drive prevention, treatment, and recovery efforts.

Pets also play an important role in many people’s lives. **The York County SPCA’s Safe Pet Program** allows families to have a safe space for their beloved pets during crises and instability, offering temporary free boarding. This support reduces emotional stress for both owners and pets during difficult times and allows them to reunite.

Each initiative underscores MHF’s unwavering commitment to creating a healthier, more compassionate community. Together, these grants build a future where mental health and well-being are prioritized for every neighbor in York County.

NEW FUND FEATURE:

CULTURAL ALLIANCE FLEXIBLE FUND

The Cultural Alliance is proud to support the work of creatives through its Creative Entrepreneur Accelerator (CEA) program. CEA offers consulting services to small businesses, mentorship, and grants for artists in our region. Navigators are well-respected artists in the York community who work one-on-one with creatives to establish goals and provide resources to grow their business.

The Flex Fund was created to endow the Navigator positions, allowing them to continue mentoring and guiding York’s creatives now and into the future.



RESTORING HOMES & *Transforming* LIVES



SCAN TO WATCH
A VIDEO HERE:



“Home repairs facilitated by Servants provide dignity to those who desire to live out their older years in the place they call home.”

Servants understands the vital role homeownership can play in breaking the cycle of poverty. By helping owners remain safely at home, they foster asset-building — creating lasting stability that can span generations. For many, home renovation goes beyond physical improvement: it becomes a means of preserving a sense of identity and place.

With Servants’ resolute commitment to transforming homes and lives, they’re not just repairing structures: they’re restoring dignity, preserving memories, and building a future of hope for York County’s residents, all with the steadfast support of York County Community Foundation.

They say there’s no place like home, and Red Lion-based Servants Inc. truly takes that to heart. For over 18 years, Servants has helped York County residents improve the safety and quality of their homes so they can remain there as long as possible.

YCCF, through the Fund for York County and Hahn Home Fund for Embracing Aging, is proud to have supported Servants’ Home Helps program with nearly \$600,000 since 2014.

With a team of 600 volunteers — many age 50 and older — Servants has repaired and modified nearly 1,500 homes across York County, increasing safety and accessibility for lower-income older adults, single parents, and people with disabilities. Typical projects include installing ramps, laying non-slip flooring, converting bathtubs to showers, and adding handrails. These efforts improve the homeowner’s quality of life and help them age in place in their home of choice.

“Our mission is to serve Christ, build relationships, transform lives, and provide hope,”
said Trent Davis, CEO of Servants Inc.

ANNIVERSARY FUND FEATURE:

YWCA OF YORK ENDOWMENT FUND

This fund was established in 1994, making it one of our oldest nonprofit agency endowments, and we think that’s worth celebrating! For over 30 years, the YWCA of York Endowment Fund has provided support for programs that foster racial and cultural understanding among residents across York County, promote the health and wellness of children, and empower women through domestic violence advocacy programs. The YWCA is committed to building this fund and welcomes additional contributions.



COMMUNITY *engagement*

We are the community foundation for York County, dedicated to helping generous donors support the nonprofit organizations and causes they care about—now and for generations to come.

To better serve the community, we listen, learn, and stay informed of the needs and opportunities. Our team actively participates alongside nonprofit partners in coalitions and collaboratives, working toward solutions to issues that matter most. Discover how we’re making connections and creating impact in York County.

**WE INVITE YOU
TO JOIN US ON THIS**
journey.

YCCF GRANTMAKING COMMITTEES:

AGRICULTURE & LAND PRESERVATION COMMITTEE
CODORUS WATERSHED ENDOWMENT ADVISORY COMMITTEE
DISTRIBUTION COMMITTEE
EMBRACING AGING DISTRIBUTION COMMITTEE
FUND FOR GREATER HANOVER COMMITTEE
MEMORIAL HEALTH FUND BOARD OF DIRECTORS
NONPROFIT MANAGEMENT ASSISTANCE COMMITTEE
RACIAL EQUITY FUND COMMITTEE
SOCIAL IMPACT INVESTMENT COMMITTEE
SUSTAINABLE ENERGY COMMITTEE



The York County Community Foundation drives community transformation by identifying high-impact efforts and making grants to nonprofits that support our mission of creating a vibrant York County. Grant priorities are based on community needs identified through research and planning.

Current priority areas include the 5 TO THRIVE:

- Career Development
- Child and Youth Development
- Health
- Housing
- Transportation

The foundation collaborates with over 100 volunteer grantmaking committee members and thousands of generous donors to manage funds and award impactful grants. Our volunteers read and evaluate applications and make funding recommendations to YCCF’s board of directors. Through this process, we hear and appreciate different perspectives and make informed decisions to spark the change our community wants to see.

2024-2025 BOARD OF DIRECTORS

HAROLD N. MYERS, JR., *Chair*
Retired
Harley Davidson Motor Company

MICHAEL GLEZER, *First Vice Chair*
CEO
Wagman, Inc.

PATRICK BRUBAKER, *Treasurer*
Principal
Hammer Creek Enterprises

ELIZABETH J. DELLINGER, *Secretary*
Treasury Management Officer
Traditions Bank, A Division of ACNB Bank

MIEKE DRISCOLL, ESQ.
Shareholder
CGA Law Firm

RANDY FREEDMAN
Consultant/Community Volunteer

CYNTHIA FRUITRAIL
Executive Vice President
& Chief Strategy Officer
WellSpan Health

OLIVER W. HOAR
Manager
Hoar Investments, LLC

MICHELLE HOVIS
Retired

LISA KENNEDY
Family Peer Support Specialist
York County Department of
Human Services

JODY ANDERSON LEIGHTY
Attorney
Saxton & Stump

HEATHER MAXFIELD
Senior VP and Consumer Sales Manager
Fulton Bank

HOLLY A. MAYER
First Vice President, Wealth Management
Mayer Wealth Advisory
Janney Montgomery Scott, LLC

SUZANNE L. MCCONKEY
Administrator
The Arthur J. Glatfelter Fire & Emergency
Services Scholarship Foundation

MATTHEW POFF
Chief Financial Officer
The York Water Company

SARAH KING REINECKER
Retired
Community Volunteer

SHERRY ROLAND-WASHINGTON, PH.D.
Owner
SRW Consulting, LLC

DAVID S. SIVEL, CFP
CEO and Managing Principal
Collective Family Office, LLC

JENNIFER STETTER
Partner, Trusts and Estates Practice Group
Barley Snyder, LLP

TIMOTHY R. WARFIELD
Retired
National Association for
Community Service Programs

LEGAL COUNSEL

ALEX SNYDER
Barley Snyder, LLC

CURRENT STAFF

NATALEE C. GUNDERSON
President & CEO

MARY KAY BERNOSKY, ESQ.
Vice President of Development

MICHELE MUMMERT, MBA
Vice President of Grants &
Community Engagement

MEREDITH SCHREFFLER, MBA
Vice President of Finance & Operations

SARAH J. THOMAS
Vice President of Communications
& Culture

JASON ANDREWS
Grants Program Manager

CATHY BOLLINGER
Executive Director of Embracing Aging

LAYLA BOYCE
Grants & Scholarship Program Manager

LAUREN GENTZLER
Executive Assistant

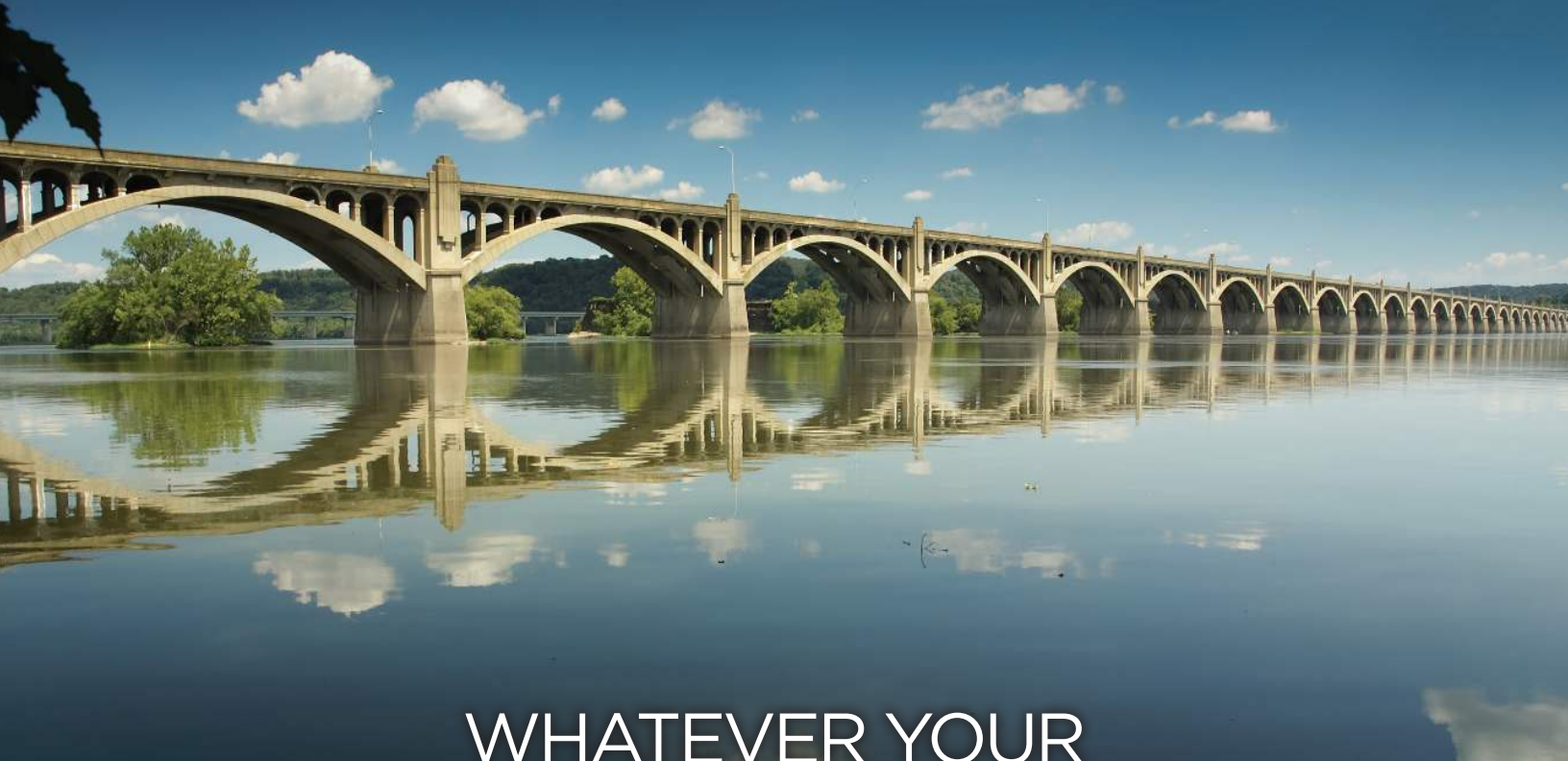
DONNA B. JONES
Controller

RABIYA KHAN
Communications Coordinator

ERIN MCANDREWS
Communications Coordinator

PHILIP A. WOODS
Gift Planning Officer

DONNYCE YOUNGER
Grants Administrative Coordinator



WHATEVER YOUR
PASSION
WE CAN MAKE IT YOUR
LEGACY

JOIN US: www.yccf.org



14 West Market Street • York, PA 17401-1617 • www.YCCF.org
717-848-3733 (York) | 717-630-1843 (Hanover) | 717-854-7231 (FAX)

CFNS
ACCREDITED
FOUNDATION
CONFIRMED IN COMPLIANCE WITH
NATIONAL STANDARDS FOR U.S.
COMMUNITY FOUNDATIONS

A copy of the registration and financial information of York County Community Foundation may be obtained from the Pennsylvania Department of State by calling toll-free in Pennsylvania, 1-800-732-0999. Registration does not imply endorsement.



Design: Visual Impact Group | **Independent Auditors:** RKL, LLP | **Affiliation:** Council on Foundations

Front Cover Photo of Howard Tunnel courtesy of Explore York