



2022 ANNUAL REPORT

# Together We Thrive

# HOW YCCF Works for You

1

## WHAT DO YOU CARE ABOUT?

- Emerging Community Needs
- Embracing Aging
- Racial Equity
- And More



2

## MAKE GIFTS

- Cash
- Retirement Assets
- Life Insurance
- Real Assets
- Securities
- Gifts by Will



3

## ESTABLISH & HELP GROW ENDOWMENTS

- Fund for York County
- Fund for Greater Hanover
- Nonprofit Agency
- Designated
- Donor Advised
- Scholarship
- Charitable Remainder Trust
- Charitable Gift Annuity

4

## CREATE A VIBRANT YORK COUNTY

- Grants
- Scholarships
- Transformational Initiatives





# Why YCCF?

## The Power Of Endowment



### Ways You Can Give

- Cash
- Stocks and other securities
- Your will
- Life insurance
- Retirement plan
- Real estate

Join hundreds of other like-minded people in building a thriving York. We are here and ready to work with you to help your gift have the most impact in the place you call home.

Talk to our team of experts to discuss how we can help you make the most of your charitable gift.

Start a fund today, or donate to any existing fund, at any time, in any amount at [www.yccf.org/donate](http://www.yccf.org/donate).

# 2022 Annual Report Message from the CEO & Board Chair

York County – you are remarkable! It is because of your generosity and our shared vision for our community that we can fuel community transformation. We are grateful for you!

In 2022, we launched new initiatives and programs, celebrated milestones, and helped organizations and individuals sustain their legacies forever. We're doing all of this in adherence to the strategic plan we began implementing last year, and are adapting as we learn.

Our Embracing Aging initiative kicked off its 10th Anniversary celebration in September 2022. When the Hahn Home board brought their assets to YCCF, we commissioned an Embracing Aging study to assess the livability of York County. The results of that study shaped our Embracing Aging program for 10 years, and led to our newest initiative, launched in April 2022, called TroveStreet. Check out page 8 to learn how TroveStreet can help you or your loved ones reimagine aging.

As community needs change, the Fund for York County enables us to adapt to the most pressing issues of the day. In 2022, we launched our THRIVE grant program, awarding grants from the Fund for York County. THRIVE grants focus on programs and collaboratives that build economic mobility for low-income people. We know we need to bring down the barriers people face when working to achieve economic mobility. We can do this by working together to connect people to opportunities and provide them with support to stay on the path to financial mobility. We get energized when we can be the fuel for transformational change in individual lives and our community as a whole. On page 7, you'll read about how one of our THRIVE grants is already changing lives.

Investing in transformational change sets YCCF apart. Because gifts to the foundation are endowed, our community has a permanent source of grants that help people thrive year after year. We're York's foundation – here to build a united and prosperous community today and for future generations.

YCCF understands that we can accomplish more together than alone. This is why we are so grateful to our many donors and the courageous community leaders who envision a better life for us all.

Thank you to all of you for choosing us as a philanthropic partner and for joining us on our journey to provide opportunities for everyone in York County to THRIVE!



Jane M. Conover, MSW  
**President & CEO**

Holly A. Mayer  
**Board Chair**

## OUR MISSION

*We create a Vibrant York County by engaging donors, providing community leadership, investing in high-impact initiatives while building endowment for future generations.*

## OUR VISION

*York County is a growing, prosperous and united community with unsurpassed opportunities for everyone to thrive.*

## OUR DIVERSITY, EQUITY AND INCLUSION NORTHSTAR

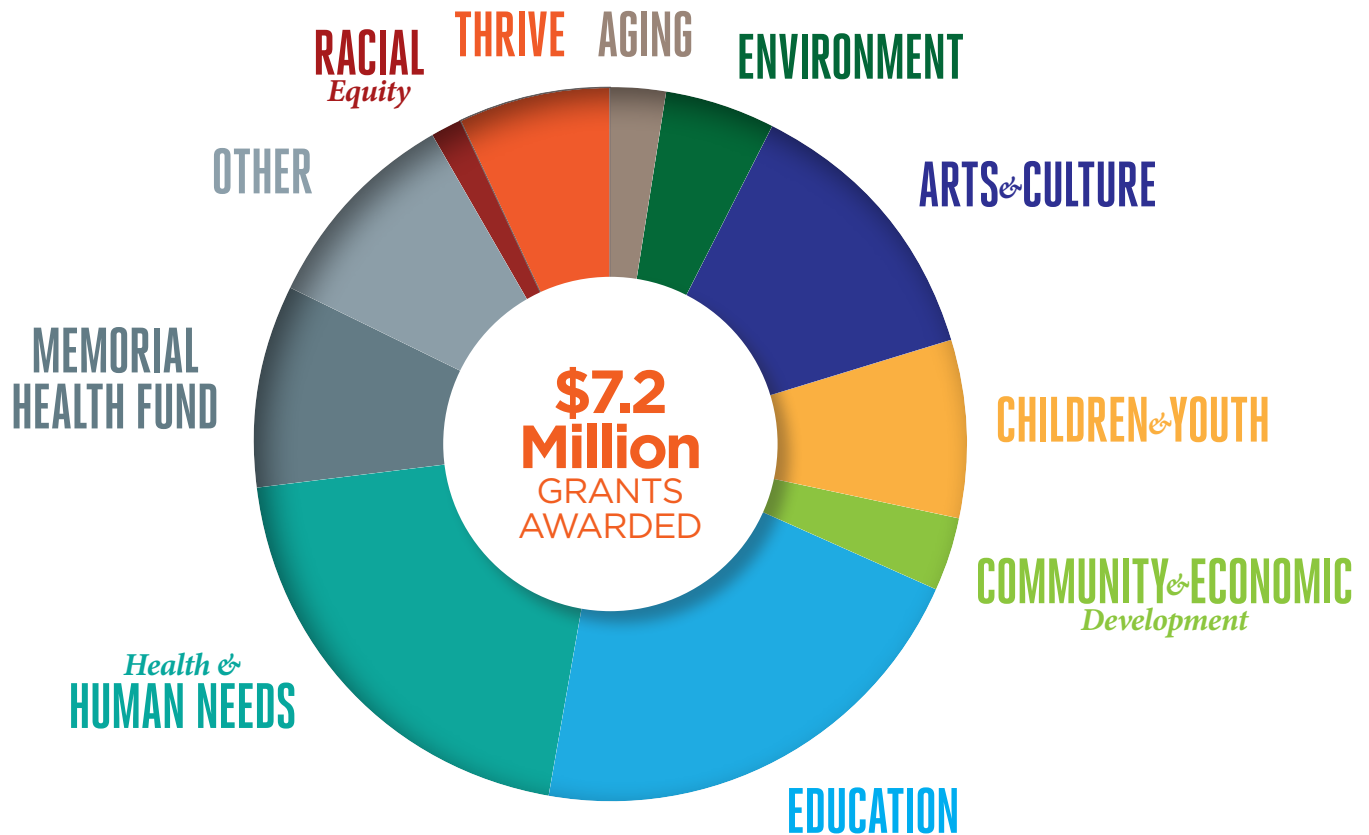
*The York County Community Foundation board and staff are committed to making York County equitable and inclusive. We will prioritize our own internal education on systemic racism, ageism, and other forms of bias. All decision-making will be mindful of equitable practices and diversity, including decisions about grantmaking, donor services and community initiatives. To fuel, lead, and support community transformation, we will be bold, intentional, authentic, and public about our values and commitment to racial equity. Sharing knowledge and power is essential to this commitment.*

# 2022 Impact

17 new funds

\$9 million in gifts

## Community Impact



Aging = \$207,723

Arts & Culture = \$972,230

Children & Youth = \$365,964

Community & Economic Development = \$264,585

Education = \$1,562,161

Environment = \$361,867

Health & Human Needs = \$1,526,794

Memorial Health Fund = \$692,677

Racial Equity = \$99,000

THRIVE = \$731,290

Other = \$366,387

\$97 million cumulative grants awarded

Asset size \$190 million



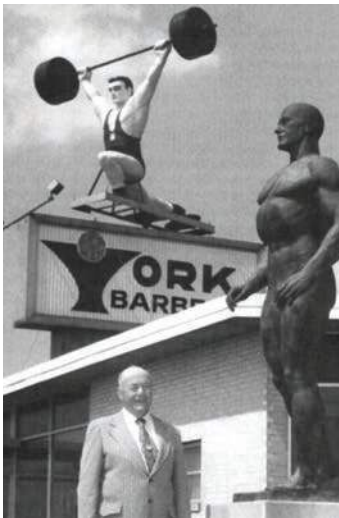
# 2022 New Funds



## **Douglas and Lorie Sheaffer Housing Fund**

Mr. Douglas Allen Sheaffer was a caring husband and father who also had a great love for his York community. Facing a terminal diagnosis of pancreatic cancer, Doug was inspired to find a way to give back to his local community. He and his wife Lorie thoughtfully established the Douglas and Lorie Sheaffer Housing

Fund prior to his passing in June 2022. Grants from the fund will support qualified nonprofit organizations that focus on affordable housing, home ownership, and the prevention of homelessness. Safe housing was of critical importance to Doug and will now be part of his legacy in York.



## **The Bob Hoffman Sports and Fitness Fund**

The Bob Hoffman Foundation was created in 1962 by Robert C. Hoffman, the founder and then president of York Barbell Company, Inc. During his lifetime, Bob Hoffman championed the causes of healthy living, nutrition, and physical fitness. Through his involvement as the president of York Barbell

Company, Mr. Hoffman promoted the sport of weightlifting, both nationally and internationally, as a path to a healthy and physically fit lifestyle. Upon his death in 1985, Mr. Hoffman's Last Will and Testament provided funding for the BH Foundation to make charitable awards and contributions for "the promotion of public health and physical fitness through education, nutrition, exercise, and athletic competition." After many years of stewarding this legacy, the Board of Directors of the Bob Hoffman Foundation decided that creating a Field of Interest Fund at YCCF is the best way to ensure that Bob Hoffman's legacy continues to support future generations. YCCF is honored to administer the Bob Hoffman Sports and Fitness Fund, continuing Mr. Hoffman's legacy.



## **DreamWrights Center for Community Arts Flexible Fund**

DreamWrights Center for Community Arts provides creative educational experiences through inclusive intergenerational performance, theatre, and arts programming. DreamWrights is inclusive of all people, responsive to the needs of the greater community, and the beacon for educational

and personal growth opportunities through creative expression in the arts. Simply said, it builds community by maintaining DreamWrights' unique culture of promoting positive interactions and inclusion among everyone involved. The organization builds character (self-worth, self-confidence, leadership, respect, and responsibility) through the learning experiences inherent in creating art together. This fund directly supports DreamWrights' programming and operations.



## **Jack and Kitty Shorb Fund for York County**

John J. ("Jack") and Katherine P. ("Kitty") Shorb have been long time supporters of YCCF and the York Community. Jack was a member of the YCCF Board from 1996 and at various times thereafter thru 2021. He also served as Legal Counsel to YCCF from May 2002 to 2013. In addition, he also served in other leadership positions in the following York

County nonprofit organizations: United Way, Farm and Natural Lands Trust, Rotary and the York Bar Association. Kitty's attention has been centered around raising and nurturing their 2 sons and teaching art for 22 years in the York County Public School System. Among the charitable organizations with leadership rolls, Kitty was involved with thru the years: the York YWCA, Camp Cann-Edi-On and Life Spectrums Spiritual Organization. The focus of Kitty's community work for over a decade is Pet Therapy with their 2 therapy dogs, certified with Alliance of Therapy Dogs.



### **York Academy Foundation Endowment Fund**

The York Academy Foundation is a 501(c)(3) nonprofit organization that was established in 2011 to support the health, welfare, and educational interests of the York Academy Regional Charter School. This fund helps ensure the foundation can carry out this mission forever.

To date, the foundation has provided educational opportunities for students and supported the Lower School Simpson Station Playground and the York Academy Upper School. It is currently focused on growing a college Scholarship Fund for graduating seniors.

**Bonnie Lake Barnes Fund**

**Dale “Sid” Trump Memorial Scholarship Fund**

**Douglas and Lorie Sheaffer Housing Fund**

**DreamWrights Center for Community Arts Flexible Fund**

**Edmund and Esther Miller Scholarship Fund**

**Gretchen Wolf Swartz Scholarship Fund, Inc. Flexible Fund**

**Jack and Ellen R. Kay Fund for York County**

**Jack and Kitty Shorb Fund for York County**

**James M. and Goldie Lentz Henderson Fund**

**James V. and Mabel L. Blouse Memorial Fund**

**Jeffrey D. Sindicich Fund**

**Joanne Gerlach Fund for Education**

**Pete and Linda Tate Family Fund for Children and Youth**

**Susquehanna Heritage Corporation Flexible Fund**

**The Bob Hoffman Sports and Fitness Fund**

**The Kenneth M. Wallick, Jr. Fund**

**York Academy Foundation Endowment Fund**





#### MEET OUR DONORS:

## Kinsley Family Fund for York County

ESTABLISHED IN 2008

Anne Kinsley, a former YCCF board chair, and her husband Bob, also a former YCCF board member, created this fund to address the most critical issues affecting York County. Over the years, their family has continued to grow the fund, and their service to York County.

Along with the York community, we mourned the unexpected losses of Tim and Jon Kinsley in January 2023.

YCCF was lucky to have Tim as a very active YCCF board member from 2010 to 2021. When Tim got involved in something, he was all in. His volunteer service was just like the rest of his life – full throttle. At YCCF, what we will remember most about Tim is his curiosity, compassion, and his willingness to take a chance on new ideas. We are one of the many groups fortunate to be touched by Tim's generosity of both his time and resources. The Community Foundation is deeply grateful for all Tim and his family have given to YCCF and to York County. Their family Fund for York County is just one way their impact will live on for years to come.

# THRIVE

## From Surviving To Thriving

New in 2022, YCCF's THRIVE grant program, funded primarily with dollars from the Fund for York County, focuses on helping people thrive by building economic mobility for low-income individuals.

Established in 1979, The PROGRAM, "It's About Change", is a nonprofit providing supportive services to formerly incarcerated individuals reentering the community. The PROGRAM's York office opened in 2019 and was largely volunteer led. In 2022, it served over 180 reentrants working to sustain productive and healthy lifestyles. The organization has seen a significant reduction in recidivism rates by providing workforce development trainings, parent and family reunification services, and housing services.

With a three-year funding term from YCCF's THRIVE grant program and in collaboration with York County Reentry Coalition and Community Action for Recovery & Diversion (CARD), The PROGRAM formed the Reentry Opportunity Center's (R.O.C.) Ready to Work Program. "Our aim is to motivate individuals to become financially stable by working with them one-on-one to achieve long-term employment goals," explained Kay Gore, Interim CEO of The PROGRAM. With the addition of a full-time Workforce Development Case Manager, the organization can bridge the gap in services and better-assist reentrants on their journey toward economic mobility. Without a detailed plan tailored to each reentrant's specific vulnerabilities, and without one-on-one support, the risk of reoffending is high.

Ashely Johnson, a young mother of two, was referred to The PROGRAM by her probation officer. She shared how The PROGRAM has helped

boost her confidence and how her mentor has supported her through the grief of losing a child and other loved ones. Through counseling, Ashley learned that her grief had caused her to behave in ways that were harmful to herself and others. "With the PROGRAM'S help, I'm able to make better decisions. My mentor helped me identify my interests and goals, and now I'm enrolling in a culinary arts program so I can support my family." When asked what advice she'd give others in a similar situation, she said, "Just don't give up! It's a struggle, but your desire to succeed has to be strong enough to push you forward."

The PROGRAM also offers reentrants help with building resumes, interview skills, obtaining legal documentation, transportation, clothing, equipment, and other wrap-around supports to assist with housing, financial education, mentoring, and basic needs.

"The goal is always self-sufficiency," shared Kay. "We know that we can improve public safety by stabilizing families and communities."

In 2019, of the almost 2,000 people paroled from York County Prison, 442 returned to jail for violating their parole conditions. These figures indicate the challenges that many people experience with reintegration. But as Ashley said, "Why give up now when there are support services out here for people?"





# AGING

## Reimagining Aging In *York County*



YCCF commissioned an Embracing Aging Study to assess the livability of York County. The report identified the need for centralizing information, services, and opportunities for older adults in the smartest, most efficient, and comprehensive way.

As a result of this study, we set on a journey to create TroveStreet.

Launched in Spring 2022, TroveStreet, an affiliate of YCCF, is an online resource that provides valuable information to help residents of York County make more informed decisions about where and how they live. Most people don't consider how their needs may change as they grow older and how that can impact their quality of life. TroveStreet encourages adults to plan for the future by offering a treasure trove of guidance, experiences, and inspiration to help them reimagine their aging.

Supported by YCCF's Hahn Home Fund and led by Executive Director Cathy

Bollinger, TroveStreet is your one-stop shop to guide adults of all ages through immediate and long-term planning related to aging. All the resources you need are on the TroveStreet website for a self-guided plan. If you prefer a more personalized approach, staff also offers individualized planning services to get the exact information you need, when you need it.

As you explore TroveStreet, you'll learn to plan confidently and proactively to help you live more easily in your home and community. Plus, you'll discover ways to take action now!

Cathy also serves as YCCF's Managing Director of Embracing Aging and has extensive knowledge in concepts of aging-in-place and creating livable communities for all ages.

Start planning for the next phase in your life at [TroveStreet.com](https://TroveStreet.com) and reimagine your aging.



### MEET OUR DONOR:

York County Community Foundation's Hahn Home Fund supports Embracing Aging, which began with the vision of one woman, Anna Gardner, who died in 1913 and left her estate to support the Hahn Home and care for older women. Now, 110 years later, her legacy lives on through Embracing Aging, which includes grants for programs serving people aged 50 and older and TroveStreet.

After a fire destroyed much of the building in 2003, the Board of Directors of the Hahn Home chose to expand on Anna Gardner's legacy and vision, while continuing the original mission. Assets of \$7.5 million were transferred to YCCF to create the Hahn Home Fund for Women. Part of the fund also supported the costs of care for the women who had been living at the Hahn Home at the time of the fire, until the passing of the last resident in 2022.

In 2022, YCCF celebrated the kick-off of a year-long 10th anniversary celebration for Embracing Aging. We honor Anna Gardner's legacy and use it to fuel our passion to change the culture around aging. Our goal is to create a vibrant York County where all ages thrive.



## MEET OUR DONORS:

### YCCF's Racial Equity Fund

Board of directors voted to create a dedicated grant fund with a lead gift as an important first step to creating real change. We understand that reversing the impacts of racial injustice will require persistent effort and continued financial support for many years to come.

## Thank You To Our Supporters:

**Mrs. Mary Kay A. Bernosky Esq.**

**Mrs. Judith V. Blakey**

**Mr. Mike and Mrs. Cathy A. Bollinger**

**Ms. Kimberly Brister**

**Mr. Peter P. and Mrs. Margaret D. Brubaker**

**Comcast Financial Agency Corporation**

**Ms. Jane M. Conover and Mr. Steven F. Izzo**

**Mr. Michael L. and Mrs. Krista S. Darr**

**Emmanuel United Church of Christ-York**

**Fulton Bank**

**Gavin Communications, LLC**

**Goldman Sachs Philanthropy Fund**

**Mr. Richard B. and Mrs. Suzanne Hershey**

**Mrs. Mary Ellen E. and Mr. Donald B. Hoyt**

**Mr. Kyle S. and Mrs. Thaisa Jones  
The Kinsley Foundation**

**Ms. Debra D. Kleyhauer**

**Mr. Randy S. and Mrs. Annette Masenheimer**

**Holly A. Mayer, Mayer Wealth Advisory at Janney Montgomery Scott, LLC**

**Mr. R. Eric and Mrs. Kendall B. Menzer**

**Mr. Harold N. Myers Jr.**

**Mr. Matthew and Mrs. Amy Poff**

**Dr. Seth M. and Mrs. Grace T. Quartey**

**Mr. Martin R. Siegel**

**Ms. Katherine Swartz**

**Mr. James Troutman**

**Wagman Corporate Community Fund**

**York County Community Foundation**

**Mr. Richard E. and Mrs. Susan A. Zerbe**

# RACIAL EQUITY

## YoCo Businesses in Full Bloom

The York County Economic Action Plan highlighted how small business lending in York County has historically lagged behind Pennsylvania and U.S. rates. Worse still, the lending rate to minority-owned businesses is even lower. A grant from YCCF's Racial Equity Fund provided the York County Economic Alliance's BLOOM Business Empowerment Center with support for its Small Business Development Program. This program included three cohort classes for aspiring business owners and existing small businesses owners with special outreach to women and minority-owned businesses.

Each BLOOM cohort met once a week for six weeks and the topics ranged from creating a mission and vision to banking and writing business plans. One course was held entirely in Spanish, the first of its kind, covering business ideation, taxes, and legal considerations. The final course covered marketing, cash flow, and HR practices.

An additional 89 people attended virtual workshops which took a deeper dive into the 5 Cs of credit and lending, accounting, and how to use Canva - a marketing and design tool.

Sully Pinos, Executive Director of the BLOOM Businesses Empowerment Center, is excited and encouraged by the outcomes. "By removing barriers and challenges for participation like

virtual and Spanish language options, we reached more people. 54% of participants were women and over 75% were BIPOC," explained Sully. Nine participants earned perfect attendance, making them eligible to apply for a BLOOM grant, and received \$13,500 collectively.

Miguel de la Riva, a graduate of the 101: Alphabet Soup of Having a Small Business Class and owner of Keystone Traffic LLC said, "The course helped me identify key areas and strategies, like marketing and payroll to help with the success of my business."

Another graduate, Liz Morales, owner of Morales Kitchen shared that the classes had given her the knowledge she needed. "I learned that I was headed in the right direction, but at the same time, the course showed me that I was missing a lot of information."

"Our goal is to continue the program, because based on the feedback, there is still a great need for information and resources to launch and expand business ownership," shared Sully.

The next class cohort will offer a new incentive to encourage participation - a reduced interest rate on a small business loan. Programs like BLOOM help YCCF's Racial Equity Fund Grant Program reach its goal of "shifting the paradigm of equitable opportunities."





# AGRICULTURE & Land Preservation

## Sowing the Seeds of Sustainability



On the night of October 25, 2021, lightning struck the Horn Farm's historic farmhouse, engulfing the second and third floors in flames. Instead of giving up and considering the property a loss, the organization used the devastating fire to rethink its goals and immediately began working on a reconstruction plan.

The 186-acre property which is situated just off Route 30 in Hellam Township has experienced its fair share of challenges in the past. To save it from industrial development, the Horn Farm Center for Agricultural Education was established as a nonprofit in 2004, and now leases the property from York County.

The farm had since been thriving with its mission to foster learning through ecological land stewardship, experiential education, and community partnerships. But nobody could prepare for the disruption caused by the pandemic. As classes were cancelled and volunteer numbers dwindled, the organization knew it needed to reconsider its operations.

And then the farmhouse caught fire.



Despite all the setbacks, Alexis Campbell, Executive Director, said her team saw it as an opportunity to plant new seeds and grow.

With a grant from YCCF's Sustainable Energy Fund, the farmhouse remodeling plan will incorporate energy efficiency and renewable energy systems, including solar panels.

The solar panels will be highly visible to commuters traveling along Route 30 – one of the busiest highways in York. “Our farmhouse was built in the 1840’s and was inefficient, especially the administrative offices and classrooms. As a leader in regenerative agriculture, our facilities should reflect our ecological values,” shared Alexis.

Sustainability, energy efficiency, and improved capacity are the main themes of the rebuild which is scheduled to begin in April 2023 and be completed in 2024; just in time to celebrate the farm’s 20th anniversary. The renovations will significantly reduce the Horn Farm’s carbon footprint, while increasing its cost-saving advantages, keeping it on track to “reap what it sows!”



MEET OUR DONOR:

Charles G. Eyster  
Family Fund

ESTABLISHED IN 1992

A successful business owner in the heating industry, Charlie Eyster was ahead of his time. He was passionate about energy conservation long before it was mainstream. Because of his forward thinking, the Charles D. Eyster Energy Fund at YCCF was created in 1992 to carry on Charlie's mission. Grants from the fund led to the first LEED-certified school building in Pennsylvania – Clearview Elementary in Hanover. Grants have also helped dozens of York County nonprofits save more than \$8 million in energy costs through conservation practices – dollars that can be used toward their missions. And, thanks to the power of endowment, Charlie's gift continues generating grants to promote conservation and achieve his vision.



MEET OUR DONOR:

## Susquehanna National Heritage Area

With so much growth for SHNA, its leadership chose to create a flexible agency endowment fund at YCCF in 2022. As a long-time agency permanent endowment fundholder, SHNA understood the benefits of having a dedicated source of funding for operations, maintenance, and future growth. With the addition of a flex fund, the organization can tap into this special endowment for bridge funding or matches for grants to help with upcoming projects.



## NONPROFITS

# Endowing Our Heritage



If you haven't journeyed to the Susquehanna National Heritage Area (SHNA) visitor center recently, you don't know what you're missing! The organization works with partners and communities to advance a vision for the Susquehanna River and our region as a national destination for heritage and outdoor travelers. In addition to running the Zimmerman Center for Heritage in York County, and the Columbia Crossing River Trails Center in Lancaster County, River Discovery Tours on the electric-powered historic Chief Uncas boat were added in 2022. The new boat tours increased visitors to the Zimmerman Center, and in 2023, Mark Platts, President, expects to double foot traffic to more than 10,000 guests.

In 2019, through an act of Congress, the organization and York and Lancaster Counties together received National Heritage Area designation – something partners had been working towards for 10 years. While this was great news, it created an added layer of responsibility and collaboration. In September 2022, the organization submitted its management plan to the National Park Service. Once approved, SHNA will increase their collaboration with other local historic

sites and area nonprofits to connect the communities of Lancaster and York Counties to one another and to the nation through stories about this nationally important place.

But that's not all. For the past six years, SHNA has also been developing plans for the long-term protection of the 87-acre historic Mifflin House and Farm. The plans include sensitively transforming the property into a visitors' center and Underground Railroad educational center and interpretive site. Implementation of the plan will begin in 2023.



YCCF is proud to be SHNA's endowment partner and steward contributions to ensure that SHNA has a steady stream of annual funding to continue to draw visitors to our picturesque county.

# CHILDREN & YOUTH

## Retaining Our Early Childhood Educators

YCCF is focusing our grantmaking on helping lower-income people achieve economic mobility. Quality childcare is critical to a child's development and to a parent's ability to sustain employment for the whole family to thrive.

York County's 2020 Economic Action Plan identified the lack of quality, reliable and affordable childcare as a major barrier to attracting and retaining a stable workforce. Today, there are close to 5,000 children in York County in need of care who do not have access because of the shortage of open childcare spots.

In 2021, local members of the Pennsylvania Early Learning Investment Commission (ELIC) initiated a program to provide an earnings supplement to early childhood teachers, administrators, and staff – the York County Early Childhood Educator Awards. The group of business leaders came together to raise the funds for the awards and continue to collaborate to seek donations from companies and other community philanthropists.

"For three decades the business and civic communities of York County have partnered to make high quality early childhood education a priority," said Peter Brubaker, one of six local members of the ELIC. "While

progress has been made, too many of our young children do not have access to high quality facilities which has an impact on our workforce, both today, and in the future."

The low wages typical in the early childhood industry make it difficult to attract and retain qualified staff. The average childcare teacher earns \$10 per hour, but childcare centers have difficulty raising salaries because they know that there is a limit to how much families can afford to pay.

"In its first year, the Early Childhood Educator Awards distributed \$459,000 to 63 home-based family providers, groups, and childcare centers reaching 311 educators and over 4,000 children throughout 22 zip codes in York County," shared Christy S. Renjilian, MSW, Executive Director of Community Connections for Children, formerly Child Care Consultants, who administers the program at no charge.

Jessica Jacobs, Center Director of Stillmeadow Nazarene Child Care Center shared that the awards made a big impact on the lives of her teachers, like Heather. "Heather said her financial stress was overwhelming, and then her refrigerator decided to stop working. The award was like a pressure release valve – giving her room to fix what was needed and still meet her monthly obligations like the mortgage and electric bill."

It will take innovation, resources, and enlightened public policy to make quality early learning a right, rather than a privilege. The community foundation is delighted to support this program as a donor and fiscal sponsor and proud to say that 100% of the contributions go to the educators.

### MEET OUR DONORS:

Funding for the Early Childhood Educator Awards is provided by:

**York County Commissioners  
ARPA Funds**

**W. Dale Brougher Foundation**

**Arthur J. & Lee R. Glatfelter  
Foundation**

**Glatfelter Insurance Group**

**The Heinz Endowments**

**M&T Foundation**

**PA Automotive Association  
Foundation**

**Powder Mill Foundation**

**Arie Knipel, Harry V. and J.  
William Warehime Foundation**

**WellSpan Health**

**Women's Giving Circle of  
YCCF**

**York County Community  
Foundation**

**And several anonymous  
donors**



## MEET OUR DONOR:



Memorial Health Fund (MHF) transforms the way our community addresses compelling health issues by improving the complete physical, mental, and social well-being of the residents of York County. Memorial Health Fund became a supporting organization of York County Community Foundation in 2015. MHF was previously a supporting organization of the former Memorial Hospital on Belmont Street. Since joining YCCF, MHF has awarded more than \$5 million in grants.

## 2022 Memorial Health Fund Board of Directors

**Michelle Hovis, Chair**

**Grace Quartey, CPA, Treasurer**

**Chloe Eichelberger**

**Tina Hess**

**Matthew Howie, M.D.**

**Mark Illfelder, M.D.**

**Anika Jackson**

**Jennette Lloyd-Jones**

**Michael Spangler, D.O.**

**Margaret Z. Swartz**

**Terrence Walker, DDS**

## MEMORIAL Health Fund

# Treating the Root Causes

York County Court of Common Pleas Judge Craig T. Trebilcock began to notice how invisible factors like substance abuse, trauma, mental health disorders, unemployment, and homelessness were driving repeated criminal behaviors. That's when the now retired judge started to see the whole person standing inside his courtroom, not just their criminal record.

Judge Trebilcock also recognized that various service systems were unable to break this cycle of reentry.

With the support of agency partners and community funders, he created the Community Action for Recovery & Diversion (CARD) program.

With additional funding from the Memorial Health Fund, CARD is now in its third year. Program director, Amy Evans says, "the goal of CARD is integrating justice, health, and human service systems to increase public safety and achieve better outcomes for York County families."

Data shows that the United States incarcerates more people than any other industrialized nation. Another alarming statistic shows that 9 out of 10 people serving a sentence deal with a social determinant of health (SDOH) – nonmedical factors that include where someone is born; lives; attends school; and works. Studies find that criminal behaviors exacerbate these factors.

By offering trauma-informed crisis intervention trainings to law enforcement, officers can recognize when an individual with a substance abuse or mental health disorder can be better served by treatment rather than incarceration.

"Instead of booking someone, an officer can now walk them down the hall to the START clinic to receive

behavioral health care services," shared Amy.

CARD's collaborative partners include York County Reentry Coalition, Probation and Parole personnel, and Wellspan Philhaven's START program, a Certified Community Behavioral Health Clinic (CCBHC), the first of its kind in south central Pennsylvania. These cross-sector partnerships have proven to be effective in preventing crime, decreasing recidivism, healing trauma, reducing victimization, and restoring people to their families and community.

Collaborating to help end the personal and generational cycles of criminal behavior will improve the complete physical, mental, and social well-being of all York County residents.

"It's working because we're connecting state agencies with community organizations, including the York County criminal justice system," explained Amy. "CARD is truly a team effort. We can make our community safer, by making people safer."

## COMMUNITY IMPACT

- **38% REDUCTION**  
in County Prison population over 10 years\*
- **2600+ EMERGENCY**  
room diversions since 2021\*\*
- **93% DECREASE**  
in wait times over traditional outpatient treatment\*\*
- **88% DECREASE**  
in in-patient admissions for Reentry Team clients\*\*\*

\*Data courtesy of CARD & York County Prison.

\*\*Since beginning of START clinical operations on 7/21/21

\*\*\*6 months pre-incarceration inpatient admissions compared to 6 months post-release.



## 2022-2023 Board of Directors

**HOLLY A. MAYER**, Chair

First Vice President, Wealth Management  
Mayer Wealth Advisory  
Janney Montgomery Scott, LLC

**HAROLD N. MYERS JR.**, First Vice Chair

Area Manager 3PL/Maintenance  
Harley Davidson Motor Company

**MICHAEL GLEZER**, Second Vice Chair & Treasurer

CEO  
Wagman, Inc.

**LIZ DELLINGER**, Secretary

Director of Treasury Management  
Traditions Bank

**JANE M. CONOVER**, ex-officio

President and CEO  
York County Community Foundation

**KRISTA SNYDER DARR**

Executive Vice President  
Fulton Bank

**DOMINIC DELLICARPINI**

Dean, Center for Community Engagement  
York College of Pennsylvania

**MIEKE DRISCOLL, ESQ.**

CGA Law Firm

**RANDY FREEDMAN**

Consultant/Community Volunteer

**MICHAEL HAUN**

Vice President and Financial Advisor  
Merrill Lynch Wealth Management

**OLIVER W. HOAR**

Manager  
Hoar Investments, LLC

**MICHELLE HOVIS**

Retired

**JACK KAY**

President & CEO  
Susquehanna Real Estate

**LISA KENNEDY**

Family Peer Support Specialist  
York County Department of Human Services

**JODY ANDERSON LEIGHTY**

Attorney  
Stock and Leader

**JEFFREY D. LOBACH, ESQ.**

Managing Partner  
Barley Snyder

**SUZANNE L. MCCONKEY**

Vice President of Human Resources  
Glatfelter Insurance Group

**MATTHEW POFF**

Chief Financial Officer  
The York Water Company

**SARAH REINECKER**

Retired  
Community Volunteer

**SHERRY ROLAND-WASHINGTON**

Owner  
SRW Consulting, LLC

**MARIA ROYCE**

Senior Vice President and Chief Strategy Officer  
WellSpan Health

**DAVID S. SIVEL, CFP**

CEO and Managing Principal  
Collective Family Office, LLC

**TIMOTHY R. WARFIELD**

Retired  
National Association for Community Service Programs

## Legal Counsel

**ALEX SNYDER**

Barley Snyder, LLC

## Current Staff

**JANE M. CONOVER, MSW**

President and CEO

**MARY KAY BERNOSKY, ESQ.**

Vice President of Development

**ADRIAN N. BUCKNER, MBA**

Vice President of Grants & Community Engagement/Chief  
Diversity, Equity, and Inclusion Officer

**MEREDITH SCHREFFLER, MBA**

Vice President of Finance & Operations

**SARAH J. THOMAS**

Vice President of Communications & Culture

**JASON ANDREWS**

Grants Program Manager

**CATHY BOLLINGER**

Managing Director of Embracing Aging/Executive Director of  
TroveStreet

**LAYLA BOYCE**

Grants & Scholarship Program Manager

**KRISTIN GARBER**

Assistant Controller

**CHAWNA GRIFFITH**

Grants Administrative Assistant

**DONNA B. JONES**

Controller

**RABIYA KHAN**

Communications Coordinator

**ANNE ROSS KNOELLER**

Development Administrator

**MICHELE T. MCKINNEY**

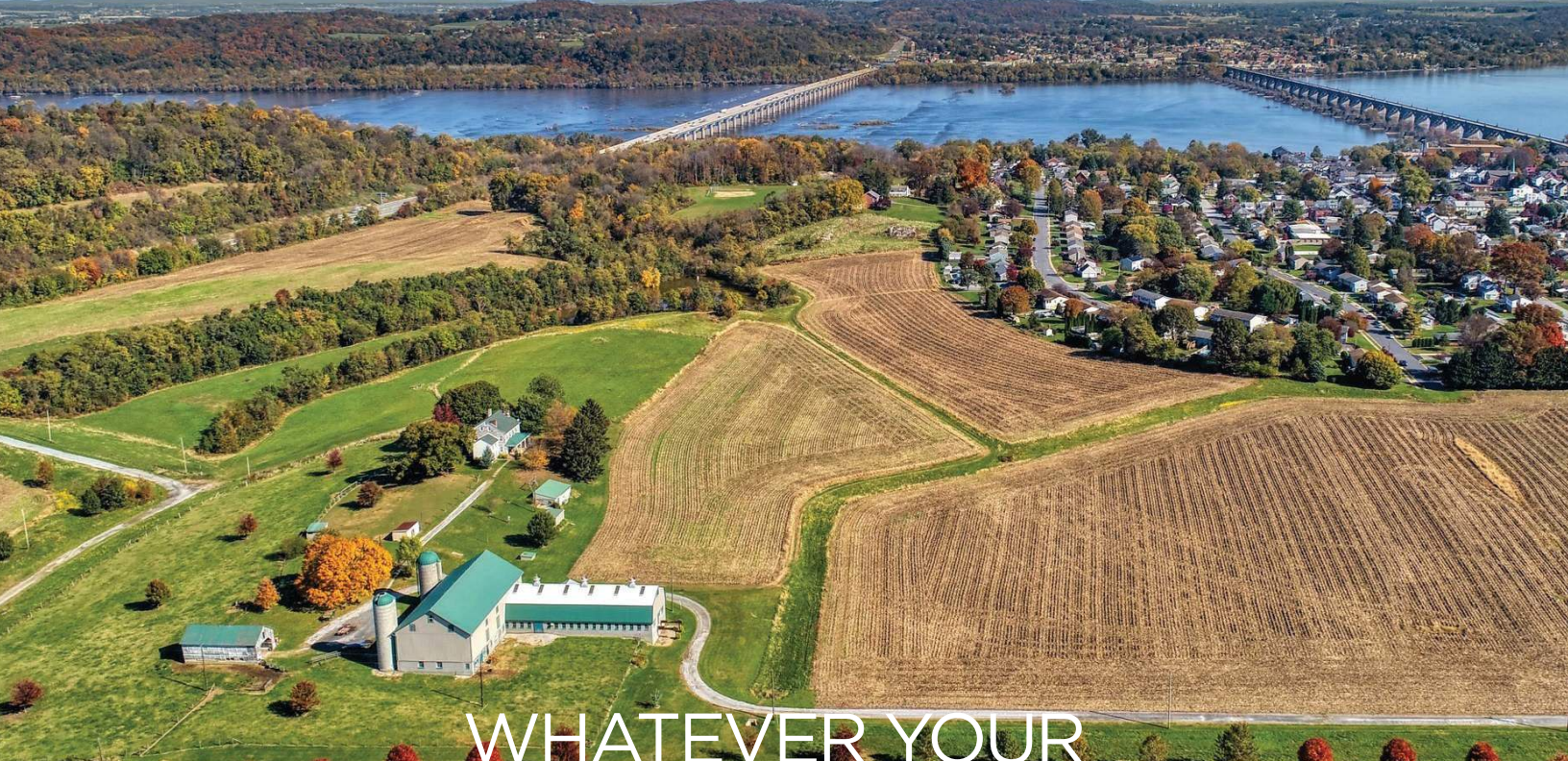
Finance & Human Resources Administrator

**EYDIE WISE**

Executive Assistant

**PHILIP A. WOODS**

Gift Planning Officer



WHATEVER YOUR  
**PASSION**  
WE CAN MAKE IT YOUR  
**LEGACY**

JOIN US: [www.yccf.org](http://www.yccf.org)



YORK COUNTY  
COMMUNITY FOUNDATION

14 West Market Street • York, PA 17401-1617 • [www.YCCF.org](http://www.YCCF.org)  
717-848-3733 (York) | 717-630-1843 (Hanover) | 717-854-7231 (FAX)

*A copy of the registration and financial information of York County Community Foundation may be obtained from the Pennsylvania Department of State by calling toll-free in Pennsylvania, 1-800-732-0999. Registration does not imply endorsement.*



CONFIRMED IN COMPLIANCE  
WITH NATIONAL STANDARDS  
FOR U.S. COMMUNITY  
FOUNDATIONS

**Design:** Visual Impact Group | **Independent Auditors:** RKL, LLP | **Affiliation:** Council on Foundations  
*Front Cover Photo of Horn Farm Land Sustainability Class by Royce Images Photography*