



# How YCCF *Works for You*

It's personal, simple, and satisfying!



You care about your community and want to give.

## **During Lifetime**

- Easy giving options
- Tax advantages
- Choose level of involvement
- See impact now
- Be connected
- Legacy beyond your life

## **After Lifetime**

- Easy giving options
- Choose now what causes to support
- Legacy for future generations

**At YCCF, your gift grows and gives perpetual support to the causes you care about.**

# Why YCCF?

We help you turn your passion  
*into your legacy*



## Ways You Can Give

- Cash
- Stocks and other securities
- Your will
- Life insurance
- Retirement plan
- Real estate

Join hundreds of other like-minded people in building a greater York. We are here and ready to work with you to help your gift have the most impact in the place you call home.

Talk to our team of experts to discuss how we can help you make the most of your charitable gift.

Start a fund today, or donate to any existing fund, at any time, in any amount at [www.yccf.org/donate](http://www.yccf.org/donate).

# 2018 Annual Report Message from Leadership

Dear friends:

We are so very grateful to the 23 newest fundholders and the many other donors who contributed \$4.5 million to the Community Foundation's endowment. Another 14 people decided to name YCCF in their estate plans so that after their lifetimes, their generosity will support the charities they care about.



Those gifts are so important because they sustain hundreds of charities doing incredible work throughout York County. In 2018, donors' funds granted \$5.9 million to 355 nonprofits throughout York County and beyond. Young people are getting support to develop into healthy, engaged adults. Workers are receiving training that is state of the art and accessible. Downtowns and neighborhoods are rebuilding and thriving, and older adults are finding opportunities to stay independent and engaged.

The year ahead looks to be equally impactful as we expand our partnerships with organizations and individuals committed to collectively and cooperatively addressing our community's greatest challenges. We know that progress is best made by focusing our collective resources, talent and passion towards a common problem. We'll work with expert programs to support parents of our youngest citizens facing adversity. We'll partner with influencers to make York a great place to age. We'll help farmers comply with stormwater requirements to keep their operations sustainable and our farming community strong. And, of course, we will continue to partner with you and the many generous people of York County who want their gifts to go farther and last longer by creating endowed funds at YCCF.

YCCF is your foundation for your community and, by working together, we can ensure that it is a growing, prosperous and united community with unsurpassed opportunities for everyone to thrive for generations to come.

Jeffrey D. Lobach, Esq.

Jane M. Conover, MSW

## OUR MISSION

*"We create a Vibrant York County by engaging donors, providing community leadership, investing in high-impact initiatives while building endowment for future generations."*

## OUR VISION

*York County is a growing, prosperous and united community with unsurpassed opportunities for everyone to thrive.*



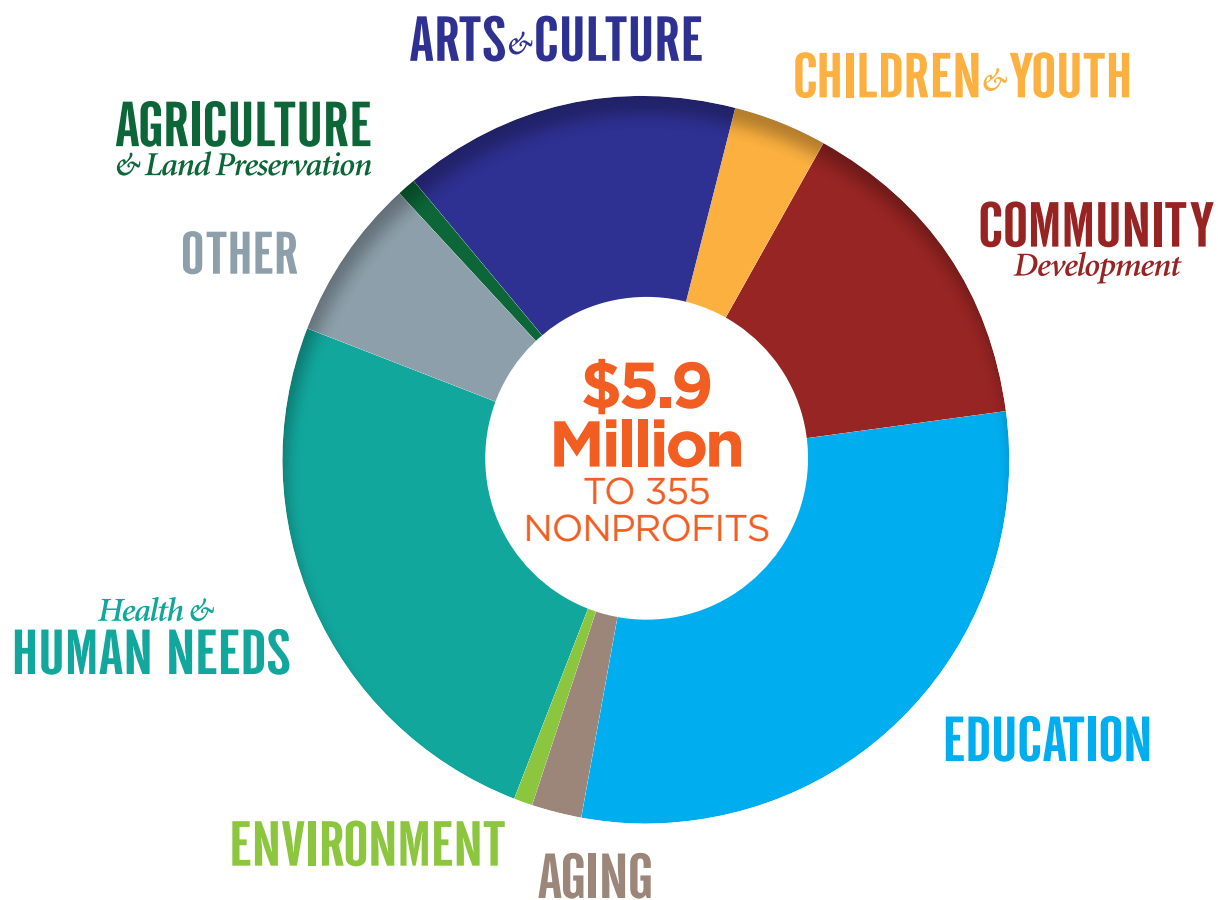
# 2018 Impact

**23** new funds

**431** donors

**\$4.5 million** in gifts

## Community Impact



Agriculture & Land Preservation = **\$40,772**

Arts & Culture = **\$913,805**

Children & Youth = **\$253,387**

Community Development = **\$820,346**

Education = **\$1,716,434**

Aging = **\$400,759**

Environment = **\$82,412**

Health & Human Needs = **\$1,284,996**

Other = **\$427,434**

**\$69.6 million** cumulative grants awarded

Asset size **\$142 million**

# 2018 New Funds

## **Mark Shoemaker Memorial Fund for Christian Business Men's Committee of York**

## **Christian Business Men's Committee of York Flexible Fund**

## **CGA Law Firm Fund for York County**

## **Christ Evangelical Lutheran Church of Dallastown Endowment Fund**

## **Christ Evangelical Lutheran Church of Dallastown Flexible Fund**

## **The Financial Advisory Group Community Fund**

## **Norman and Ruth Gladfelter Fund**

## **Grace UCC Endowment Fund for York County**

When Grace United Church of Christ (UCC) on Hartley Street closed its doors after 130 years, members of the congregation



wanted to carry on the name and the mission of helping others. Working with their professional advisor, Charlie Rausch, the Church Council turned to YCCF for a charitable option that would benefit the community. Grace UCC opened a Fund for York County to help a variety of nonprofits and keep the Grace name alive.

## **Hard Bargains Maintenance Fund**

## **Jeffrey Hines and Patti Stirk Fund**

Jeff Hines and Patti Stirk have volunteered for dozens of organizations and projects in York County, including YCCF. Choosing just a few passions to support wouldn't fit their personalities or lifestyle, so they started a donor-advised fund at YCCF to streamline their philanthropic giving. The Jeffrey Hines and Patti Stirk Fund provides the ability to recommend grants to any nonprofit organization, making it flexible to fit their needs.



"The DonorCentral online portal has been a great help in managing and tracking recommendations. At a glance we can pull up our fund status, review previous donations, and with a couple of keystrokes make a recommendation to support some of the many outstanding York County charities! It's a super-efficient and easy to use system!" said Jeff.

## **Keystone Kidspace Endowment Fund**

## **Ralph K. and Mable M. Kise Fund**

Created by Susan M. Kise's estate to turn her passions into her legacy, this fund is named in memory of Susan's parents, Ralph and Mable. It benefits Martin Library to support intellectual and literacy freedom, and the YWCA York for support of youth and adult aquatic programming needs. Susan was a standout swimmer for York High and won many awards throughout her years. The YWCA gave her that opportunity, for which she was always grateful.





**Holman Z. and Mildred A. Leese  
Scholarship Fund**

**Maryland and Pennsylvania  
Railroad Preservation Society  
Flexible Fund**

**Frank Motter Fund for the Rotary  
Club of York**

**Donald and Barbara Myers  
Endowment Fund**

**John L. and Dorothy E. Schlaline  
Memorial Fund**

**Servants Inc. Endowment Fund**

**Mack L. and Karen J. Smith Fund**

**Take Me Out to the Ball Game  
Fund**

**York City Little League Flexible Fund**

York City Little League chartered as an Urban Initiative, under Little League International, in 2005. It was then that the Rotary Club of York, YMCA, City of York, MLB Baseball Tomorrow Fund, and a number of local businesses and individuals offered support to establish the league. Their donations helped renovate baseball fields at Allen and Odeon (Bantz) Park, as well as provide equipment and uniforms for the players. York City Little League now maintains 7 fields within the City of York. They serve over 300 youth age 4-15 during the spring season and more than 100 additional youth during the fall season. This Fund joins York City Little League's agency endowment to provide lasting, permanent and flexible support for the York City Little League to ensure it continues to provide safe fields, proper equipment, and adequate uniforms to the next generation.



PHOTO CREDIT: KRISTA WOLFENBERGER

**York Suburban Battle of the Buildings  
Scholarship Fund**

York Suburban (YS) Dollars for Scholars Chapter established the Battle of the Buildings (BOB) Scholarship Fund, a fully-endowed scholarship, as a way of giving back to the York Suburban community that has supported YS Dollars for Scholars through the BOB event over the years. Faculty, students, and families come out to show their school spirit by rooting for volunteers representing the six schools in the district. The first BOB scholarship will be awarded in May 2019 and then annually thereafter. This fund will stand in perpetuity as a constant acknowledgment of the support and generosity the YS community has shown YS Dollars for Scholars during the bi-annual BOB event.

**The York Water Company Fund  
for York County**







MEET OUR DONORS:

## Earl & Margaret Brown Family Fund

Margaret Brown and her sons, Stanley, Roger, and Richard, established the Fund in 1995 to help preserve farmland in York County and encourage students pursuing careers in agriculture. Earl Brown founded Earl E. Brown Orchards in 1948, which had been operated by his son, Stanley, and his grandson Dave, and now by his granddaughter, Linda, and Dave's wife, Mary.

The grant (see story on right) to support the drone project was likely beyond Earl's wildest imagination but is a testament to the power of an endowed fund at YCCF. Over 23 years, the Earl & Margaret Brown Family Fund has awarded more grants than the original gifts to the fund, and the balance is preserved to continue to grant for years to come!

## AGRICULTURE & Land Preservation

# Flying High

## to Preserve Farming in York County



Through a grant from YCCF's Agriculture and Land Preservation Fund, local farmers can now use drone imaging to have a bird's-eye view of their fields to maximize yield while pinpointing where fertilizer and pesticide treatments are needed most.

Contemporary farming techniques, including chemicals and fertilization, have exponentially increased farmers' yield per acre. However, over-using these treatments is costly to farmers, and increases byproducts that find their way into York area water sources. With the YCCF grant, engineering students from York College used a drone to collect video data about nutrients, weeds, and pests. In 2018, the students analyzed that data to identify for farmers where to focus their field treatments, reducing over-application of chemicals while maintaining the

**THE AGRICULTURE AND LAND PRESERVATION FUND HELPS PRESERVE FARMING IN OUR COMMUNITY. DRONE COLLECTED DATA REDUCES THE TIME AND MONEY FARMERS SPEND ON FERTILIZERS AND CHEMICALS.**

benefits, ultimately saving farmers money and time.

Donors to YCCF understand the importance of York's agricultural heritage to both our past and our future. To preserve farming in York County, YCCF grants provide technical assistance like the grant to York College to help farmers comply with conservation regulations, scholarships to those in our farming community to gain the latest skills, and have helped preserve hundreds of acres of farmland in York County.



## COMMUNITY *Development*

# Shining a Light on York's Unique Assets

York's fabulous historic architecture has made it a national historic district, with an "historically edgy" downtown.

At its center, stands Continental Square. The heart of revitalizing downtown, the Square was neglected until YCCF commissioned a study to revive it. The study envisioned lighting the exterior of its iconic buildings as a way to highlight their beauty and draw people to the city center. One building stood out as a prime opportunity for reinvestment – the Dempwolf-designed Rupp Building on the southwest corner of the Square.

With funding from YCCF's Beautiful York Endowment, Downtown Inc secured lighting designs for all the buildings on the Square and began switching on the lights. In 2018, RSDC purchased the building, with lighting the exterior's exquisite

gargoyles and cornices as an important part of their plan.

Now, as visitors patronize restaurants, shops, and cultural venues in downtown York in the evenings, the Rupp Building lights remind them of the historic assets that make York special.

In 2018, 33 new businesses and 132 new residential units were added downtown, plus two new businesses will be opening next year in the Rupp building.

YCCF understands that a strong downtown is at the heart of a stronger York County. We are proud of our investments in a vibrant downtown, including as a lead partner in the creation of the "Historically Edgy" Downtown York and "Have It Made Here" York County destination brands that will show off our city to visitors from around the world.



### MEET OUR DONORS:

## Don and Barb Myers

As a young girl, Barb Myers, like many others, remembers going to downtown York to shop at the department stores and Central Market. "It's wonderful to see shops returning to downtown," remarks Barb, "and to see the older buildings in downtown being redone."

Her husband, Don, who worked at the YMCA of York County, remembers when bands played every night of the week in different city parks.

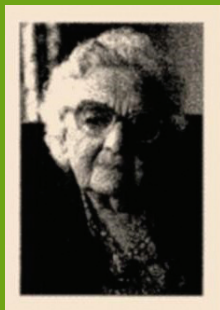
The Myers are grateful for the opportunities they had and wanted to give back to the community that provided them. Along with friend and estate planning advisor Bill Anstine, they turned to YCCF to create a fund to build their legacy.

Working with our development team, Don and Barb created the Donald and Barbara Myers Endowment Fund to provide designated support to downtown revitalization, the YMCA, arts and culture, and the parks of York City after their lifetimes.





**BY DESIGNING THE TRAIL TO BE EIGHT-FEET WIDE, WHEELCHAIRS AND STROLLERS ALIKE CAN EASILY USE THE TRAIL, MAKING IT FUN FOR ALL AGES!**



MEET OUR DONORS:

## Anna Gardner and the Hahn Home Fund for Embracing Aging

Anna Gardner died in 1913, and now, 105 years later, her legacy of caring for older adults lives on at YCCF. She left her estate to care for older women, so that regardless of their finances, they could live out their days with respect. Now Anna's legacy has evolved into the Hahn Home Fund for Embracing Aging at YCCF. Her passion for making sure older members of our community can live how they choose continues today through the grants awarded.



## AGING

# Wider Paths

Provide Access to Nature for All

The West Manchester Senior Trail and Nature Park will contain four acres of native plants and trees, birds, butterflies and bees in West Manchester Township, and incorporate many features for the senior residents at Normandie Ridge Senior Living Community and the young families at nearby The Greens at Westgate Apartment Homes. Supported by a grant from YCCF's Hahn Home Fund for Embracing Aging, the half-mile paved trail around the park is designed to be two-feet wider than a standard trail, not only allowing for a wheelchair and stroller to travel side by side, but also for emergency vehicle access.

Normandie Ridge facilitated focus groups with community residents and received many great ideas to make the park friendly for people of

all ages. Bathroom facilities will be available at parking areas and in the park. Extra benches allow people to take a break and enjoy nature. Educational centers are sprinkled throughout the nature park, so older adults can share knowledge with younger generations. The quiet atmosphere of this park also allows for peaceful reflection.

The project is led by Normandie Ridge, and is supported by the community. West Manchester Township Parks and Recreation will care for the park when it opens in the Fall of 2019. Embracing Aging is especially excited about this project because it aligns with its goal of creating more age-friendly physical spaces and increasing access and ease of mobility for older adults.

*This project is also supported by a grant from the Memorial Health Fund, a supporting organization of YCCF.*



# CHILDREN & YOUTH

# Setting <sup>The</sup> Stage

## for School Success

Do you remember who taught you to say your first word, use a spoon, to walk? Chances are, it was a parent. Parents are our earliest teachers, setting the course for how we learn for the rest of our lives.

But parents often need support to be the best teachers for their children. Child Care Consultants is providing that support through Parents as Teachers, a national, evidence-based early childhood home visiting program.

Now in York County for the first time, thanks to a grant from YCCF's Fund for York County, the model uses a relationship-based approach to making sure children are ready for school. Learning experiences are customized for each family, and include home visits, group meetings with other families, health and development screenings, and access to resources for each family.

Harvard-based research shows that by building upon parent and caregiver

skills and focusing on specific stresses faced by the children and family, an individualized plan positively impacts children's school readiness and narrows the achievement gap between children living in poverty and those who aren't.

It is especially important in York City, where 55% of students live in acute poverty, only 21% of elementary school students are proficient in reading, and only 8% are proficient in math. Parents as Teachers is currently serving 20 families in its pilot phase.

Education is a core focus for the Fund for York County, helping improve children's ability to succeed academically and reducing the stresses that prevent them from coming to school each day, ready to learn. A strong foundation helps children be well-prepared for life and work and is the key to their future and the future of our community.



### MEET OUR DONORS:

## Phil and Kay Sheridan Fund for York County

Phil Sheridan spent a lot of time working with young people. He served as Boy's Physical Director at the York YMCA when the Sheridans came to York in the late 1940s. Later, Phil and his wife Kay worked together in their family business, Sheridan Associates, for 40 years until Phil's death. Phil and Kay shared many interests – in music, theater, bridge, travel – and especially in caring about the community's children. Kay established the fund in Phil's memory, choosing YCCF because of our work supporting children, enabling Phil and Kay to continue that impact forever.



Results *You* Deserve.com

#### MEET OUR DONORS:

## Katherman, Briggs and Greenberg Community Fund

To celebrate the firm's 30th anniversary in 2013, attorneys from Katherman, Briggs and Greenberg (KBG) created an endowed donor advised fund at YCCF to streamline, encourage, and organize its community philanthropy. KBG's long-standing tradition of giving back to the community continued in 2018, when they recommended a grant from their Fund to the Cultural Alliance of York County to support projects to help artists. "We appreciate the ability to think strategically about our firm's giving and the flexibility to suggest grants to organizations we see doing good work in our community, like the Cultural Alliance," says Brian Strong, Esq., Managing Partner of KBG.

## ARTS & CULTURE

# Supporting Artists to Make York Vibrant

Thriving communities across America recognize that cultural activities are key attractors for talented workers and visitors, and provide a boost to the economy. In York County, the arts brought over \$14 million in economic impact in 2018. As the Cultural Alliance of York County approached its 20th anniversary and prepared for a change in leadership, the staff and board of directors evaluated how to best sustain their support of the arts community into the future.

Through grants from the Charlotte R. Langione Fund and the Walter B. Loucks-Michael Alan Bose Arts Fund at YCCF, the Cultural Alliance held empathy interviews with 25 York County artists from various backgrounds and an ideation session with 43 artists to get feedback and hear what would benefit York's arts community the most. The major theme that emerged from these interviews was that the most talented artists feel they need to



leave York to continue to grow as artists and be paid a market rate for their skill.

These findings will be the basis for a new funding model being developed by the Cultural Alliance to be implemented in 2020, allowing the organization to continue to enrich the lives of all York County citizens through the arts.

Transforming our cultural sector is the type of strategic and exciting work YCCF donors support when they partner with us.

**"ONE OF THE BIGGEST CHALLENGES THAT ARTISTS FACE IN YORK IS COMMUNITY PERCEPTION OF THEIR VALUE. WHEN THE COMMUNITY VALUES THE EXCELLENCE OF OUR ARTISTS, WE WILL SEE A RISING TIDE THAT LIFTS ARTISTS OF ALL LEVELS IN YORK."**

— KELLEY GIBSON, PRESIDENT, THE CULTURAL ALLIANCE OF YORK COUNTY





# Building Connections

## for a Healthy Community

Children born underweight face huge developmental challenges with lifelong consequences for them, their families, and their communities. The March of Dimes estimates the societal cost of low birthweight babies at an estimated \$26 billion annually nationwide. In York City, 11.5 percent of babies born in 2012 were low birth weight, weighing less than five pounds, eight ounces, compared to only eight percent of babies born in York County.

Through a \$525,000 multi-year grant from the Memorial Health Fund, Family First Health, a federally qualified community health center, offers a free community outreach program for expectant mothers in York City to help ensure a healthy pregnancy and increase chances of delivering a full-term, healthy-weight baby.

The Connections for a Healthy Pregnancy program hired four community health workers (CHW) from York City neighborhoods who underwent special training to connect the mothers with services to help them in their pregnancy. The CHWs meet with expectant mothers during a prenatal visit at local healthcare providers, and then continue to check in on a regular basis through home visits and by phone to discuss needs, provide peer support, and connect the mothers with local community resources.

The most pressing concern for mothers in the program is safe and affordable housing. The CHWs help the mothers identify options that are available in their budget, but this dire need has drawn attention to the scarcity of housing resources in York City. Many families also need transportation resources to reach their medical appointments, so the CHWs help the mothers complete applications for transportation assistance and identify other transportation resources.

The Connections program grant is just one example of how the Memorial Health Fund supports innovative solutions to healthcare challenges facing York County.



### MEET OUR DONORS:

## Memorial Health Fund

Memorial Health Fund transforms the way our community addresses compelling health issues to improve the complete physical, mental, and social well-being of the residents of York County. Memorial Health Fund became a supporting organization of YCCF in 2015. Previously, Memorial Health Fund was a supporting organization of Memorial Hospital. Since joining YCCF, Memorial Health Fund Board has granted more than \$2.5 million.

## 2018-2019 Board of Directors

**JEFFREY D. LOBACH, ESQ.,** *Chair*  
Managing Partner  
Barley Snyder

**KRISTA SNYDER DARR,** *First Vice Chair*  
Senior Vice President, Commercial Manager  
Fulton Bank

**BRUCE BARTELS,** *Second Vice Chair*  
Retired  
WellSpan Health

**RONALD L. HERSHNER, ESQ.,** *Secretary*  
Managing Partner  
Stock & Leader, LLP

**HOLLY A. MAYER,** *Asst. Secretary*  
Vice President, Wealth Management  
Janney Montgomery Scott LLC  
Smith, Mayer & Liddle

**MICHAEL GLEZER,** *Treasurer*  
CEO  
Wagman, Inc.

**JOHN BAILEY**  
President  
Baily Coach, Inc.  
Executive Vice President  
Travel Time Travel

**TIMOTHY J. BUPP, ESQ.**  
CGA Law Firm

**ELIZABETH CARSON**  
Retired  
M & T Bank

**JOSEPH P. CLARK II, ESQ.**  
Vice President & General Counsel  
The Stewart Companies

**JANE M. CONOVER, EX-OFFICIO**  
President and CEO  
York County Community Foundation

**DOMINIC DELLICARPINI**  
Dean of Center for Community Engagement  
York College of Pennsylvania

**LIZ DELLINGER**  
Director of Treasury Management  
York Traditions Bank

**CHLOÉ R. EICHELBERGER**  
President  
Chloé Eichelberger Textiles, Inc.

**JENNIFER GEESEY**  
President  
Central Penn Benefits

**MICHAEL HAUN**  
Vice President & Investment Strategist  
PeoplesBank Wealth Management

**DARRYL E. JONES**  
Vice President  
HACC York

**JACK KAY**  
President and CEO  
Susquehanna Real Estate

**TIMOTHY KINSLEY**  
President  
Kinsley Properties

**SUSAN D. KREBS**  
Founder, Board Director  
York Academy Regional Charter School

**SUZANNE MCCONKEY**  
Vice President of Human Relations  
Glatfelter Insurance Group

**MATTHEW POFF**  
Chief Financial Officer  
The York Water Company

**SCOTT C. ROGERS**  
President  
The Glatfelter Agency / Susquehanna Agents Alliance

**MARIA L. ROYCE**  
Senior Vice President and Chief Strategy Officer  
WellSpan Health

**JOHN J. SHORB**  
Retired Attorney  
Stock & Leader, LLP

**PATTI STIRK**  
President/CEO  
Star Systems Engineering, Inc.  
d/b/a SMALL STAR Art House

**JOSEPH G. WAGMAN**  
Chairman and CEO  
Wagman Construction Inc.

**DANIEL WALTERSDORFF**  
President and CEO  
Barton Associates

**TIMOTHY R. WARFIELD**  
Retired  
National Association for Community Service Programs

## Legal Counsel

**ALEX SNYDER**  
Barley Synder LLC

## Current YCCF Staff

**JANE M. CONOVER**  
President and CEO

**GEORGE M. DVORYAK**  
Vice President of Finance & Operations and CFO

**LISE LEVIN**  
Vice President for Community Investment

**CATHY BOLLINGER**  
Managing Director of Embracing Aging

**LAYLA BOYCE**  
Grants and Scholarship Program Administrator

**DORINDA J. GROVE**  
Development Administrator

**DONNA B. JONES**  
Controller

**ANGELA M. LAUER**  
Donor Services Officer

**MICHELE MCKINNEY**  
Financial Administrator

**SARAH J. THOMAS**  
Marketing & Communications Director

**EYDIE WISE**  
Administrative Assistant







WHATEVER YOUR  
**PASSION**  
WE CAN MAKE IT YOUR  
**LEGACY**

JOIN US: [www.yccf.org](http://www.yccf.org)



YORK COUNTY  
COMMUNITY FOUNDATION

14 West Market Street • York, PA 17401-1617 • [www.YCCF.org](http://www.YCCF.org)  
717-848-3733 (York) | 717-630-1843 (Hanover) | 717-854-7231 (FAX)

*A copy of the registration and financial information of York County Community Foundation may be obtained from the Pennsylvania Department of State by calling toll-free in Pennsylvania, 1-800-732-0999. Registration does not imply endorsement.*



CONFIRMED IN COMPLIANCE  
WITH NATIONAL STANDARDS  
FOR U.S. COMMUNITY  
FOUNDATIONS